

Chapter 2: outline

2.1 principles of network applications

2.2 Web and HTTP

2.3 electronic mail

- SMTP, POP3, IMAP

2.4 DNS

2.5 P2P applications

2.6 video streaming and content distribution networks

2.7 socket programming with UDP and TCP

Persistent HTTP

non-persistent HTTP issues:

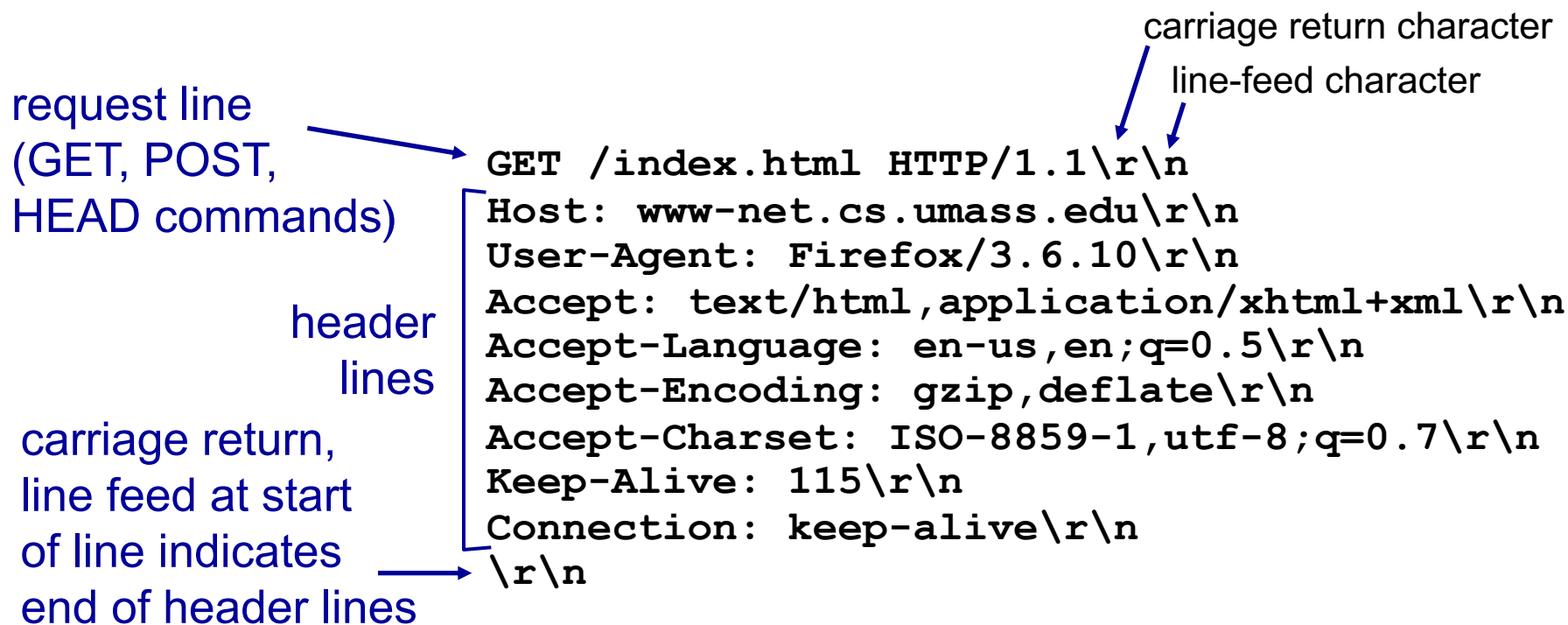
- requires 2 RTTs per object
- OS overhead for *each* TCP connection
- browsers often open parallel TCP connections to fetch referenced objects

persistent HTTP:

- server leaves connection open after sending response
- subsequent HTTP messages between same client/server sent over open connection
- client sends requests as soon as it encounters a referenced object
- as little as one RTT for all the referenced objects

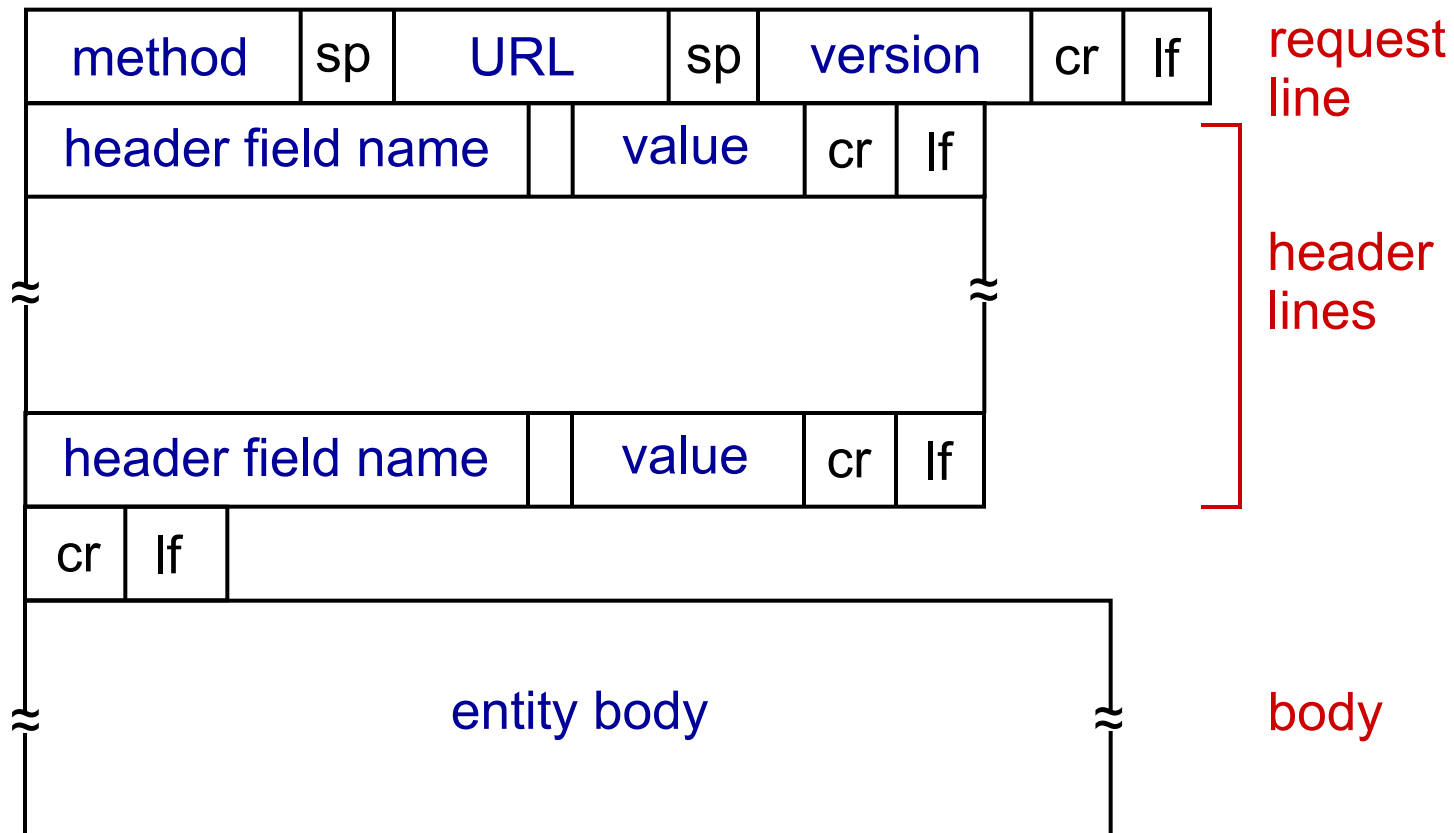
HTTP request message

- two types of HTTP messages: *request, response*
- **HTTP request message:**
 - ASCII (human-readable format)



* Check out the online interactive exercises for more examples: http://gaia.cs.umass.edu/kurose_ross/interactive/

HTTP request message: general format



Uploading form input

POST method:

- web page often includes form input
- input is uploaded to server in entity body

URL method:

- uses GET method
- input is uploaded in URL field of request line:

`www.somesite.com/animalsearch?monkeys&banana`

HTTP response message

status line
(protocol
status code
status phrase)

header
lines

data, e.g.,
requested
HTML file

```
HTTP/1.1 200 OK\r\n
Date: Sun, 26 Sep 2010 20:09:20 GMT\r\n
Server: Apache/2.0.52 (CentOS)\r\n
Last-Modified: Tue, 30 Oct 2007 17:00:02
GMT\r\n
ETag: "17dc6-a5c-bf716880"\r\n
Accept-Ranges: bytes\r\n
Content-Length: 2652\r\n
Keep-Alive: timeout=10, max=100\r\n
Connection: Keep-Alive\r\n
Content-Type: text/html; charset=ISO-8859-
1\r\n
\r\n
data data data data data ...
```

* Check out the online interactive exercises for more examples: http://gaia.cs.umass.edu/kurose_ross/interactive/

User-server state: cookies

many Web sites use cookies

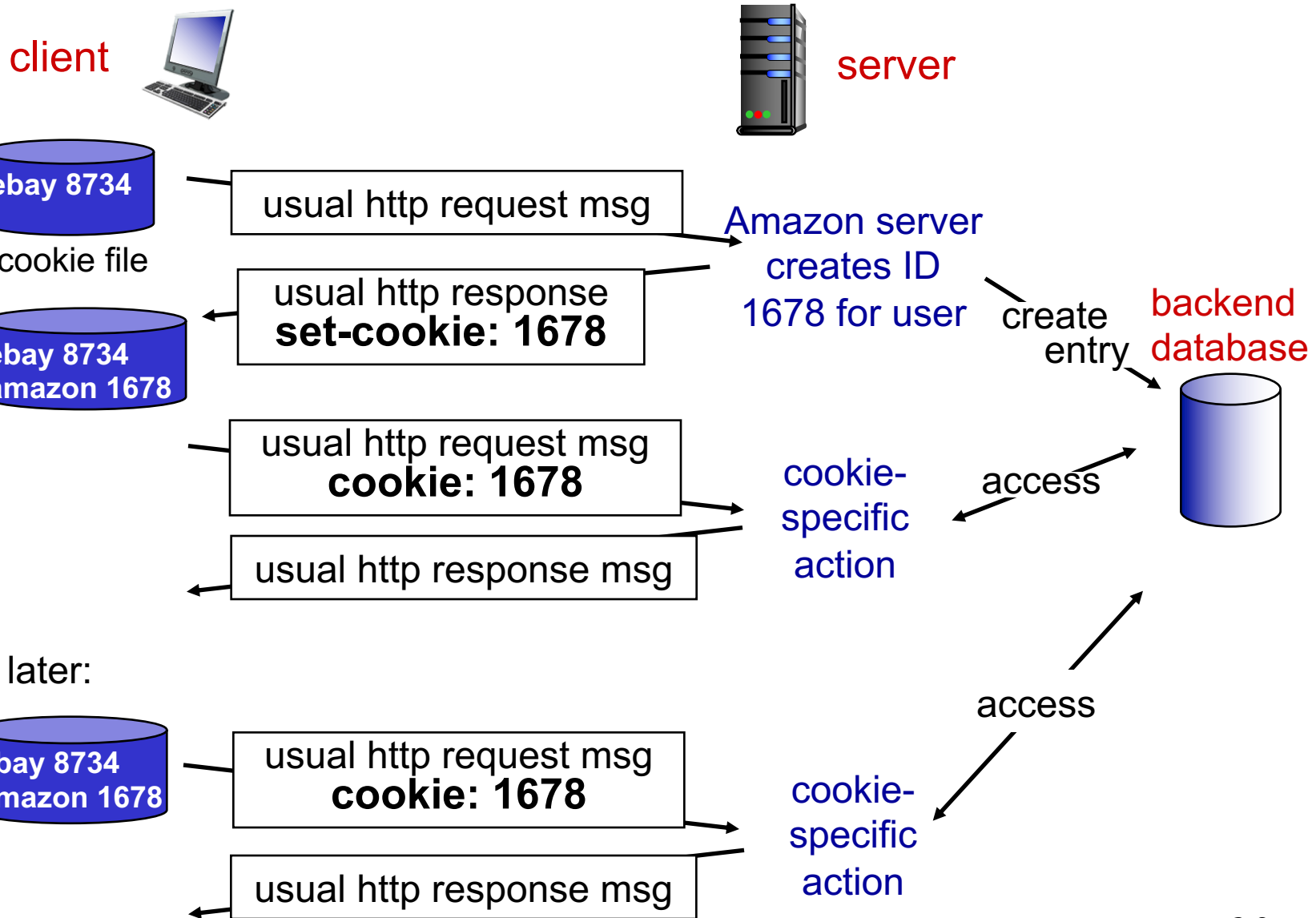
four components:

- 1) cookie header line of HTTP *response* message
- 2) cookie header line in next HTTP *request* message
- 3) cookie file kept on user's host, managed by user's browser
- 4) back-end database at Web site

example:

- Susan always access Internet from PC
- visits specific e-commerce site for first time
- when initial HTTP requests arrives at site, site creates:
 - unique ID
 - entry in backend database for ID

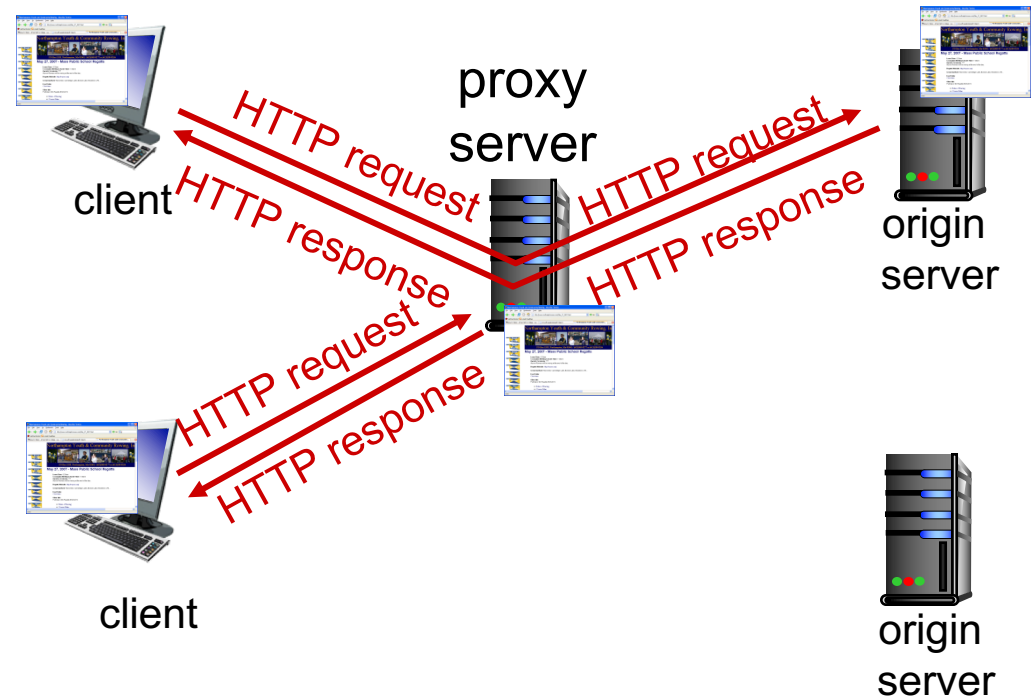
Cookies: keeping "state" (cont.)



Web caches (proxy server)

goal: satisfy client request without involving origin server

- user sets browser: Web accesses via cache
- browser sends all HTTP requests to cache
 - object in cache: cache returns object
 - else cache requests object from origin server, then returns object to client



More about Web caching

- cache acts as both client and server
 - server for original requesting client
 - client to origin server
- typically cache is installed by ISP (university, company, residential ISP)

why Web caching?

- reduce response time for client request
- reduce traffic on an institution's access link
- Internet dense with caches: enables “poor” content providers to effectively deliver content (so too does P2P file sharing)

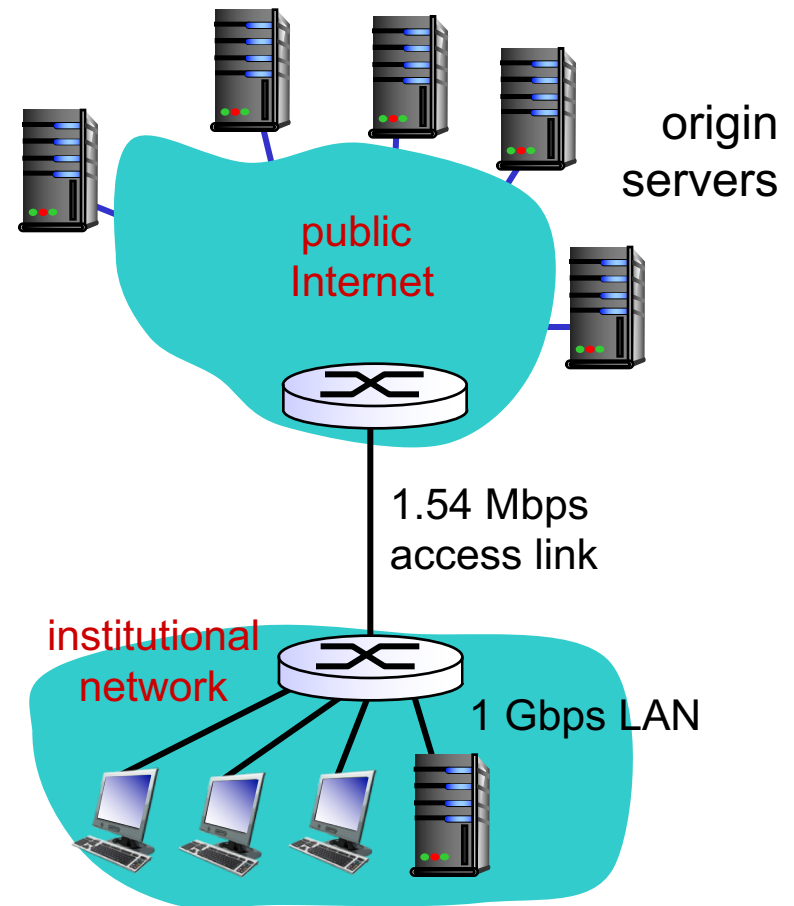
Caching example:

assumptions:

- avg object size: 100K bits
- avg request rate from browsers to origin servers: 15/sec
- avg data rate to browsers: 1.50 Mbps
- RTT from institutional router to any origin server: 2 sec
- access link rate: 1.54 Mbps

consequences:

- LAN utilization: 15%
- access link utilization = 99% *problem!*
- total delay = Internet delay + access delay + LAN delay
= 2 sec + minutes + usecs



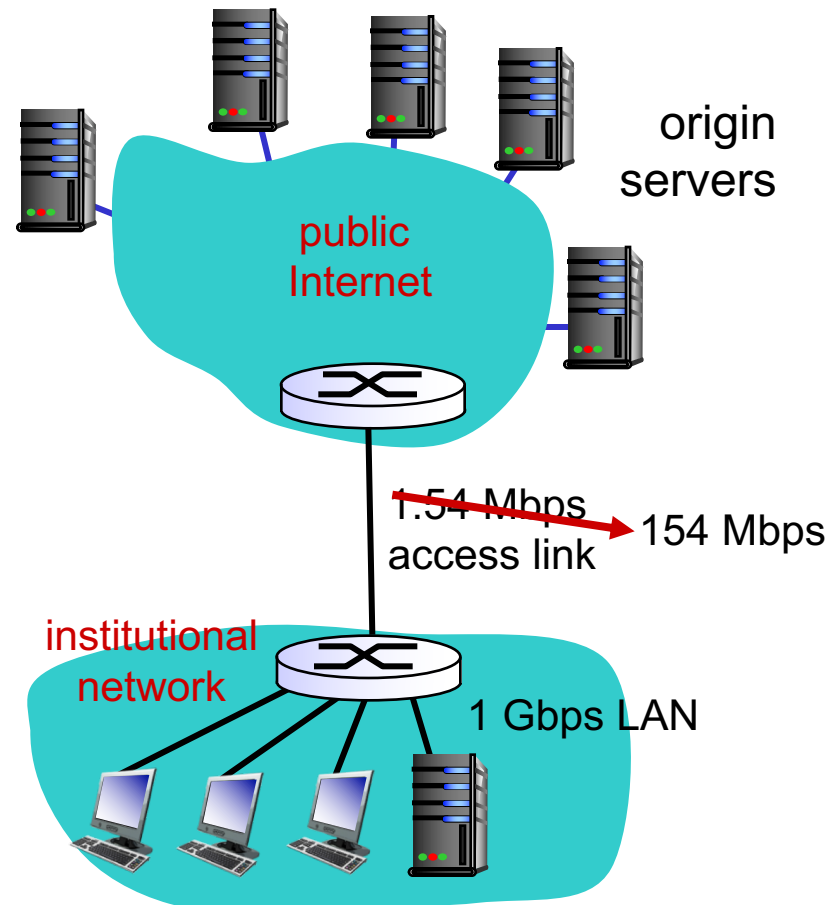
Caching example: fatter access link

assumptions:

- avg object size: 100K bits
- avg request rate from browsers to origin servers: 15/sec
- avg data rate to browsers: 1.50 Mbps
- RTT from institutional router to any origin server: 2 sec
- access link rate: ~~1.54 Mbps~~ → 154 Mbps

consequences:

- LAN utilization: 15%
- access link utilization = ~~99%~~ → 9.9%
- total delay = Internet delay + access delay + LAN delay
= 2 sec + ~~minutes~~ → msec



Cost: increased access link speed (not cheap!)

Caching example: install local cache

assumptions:

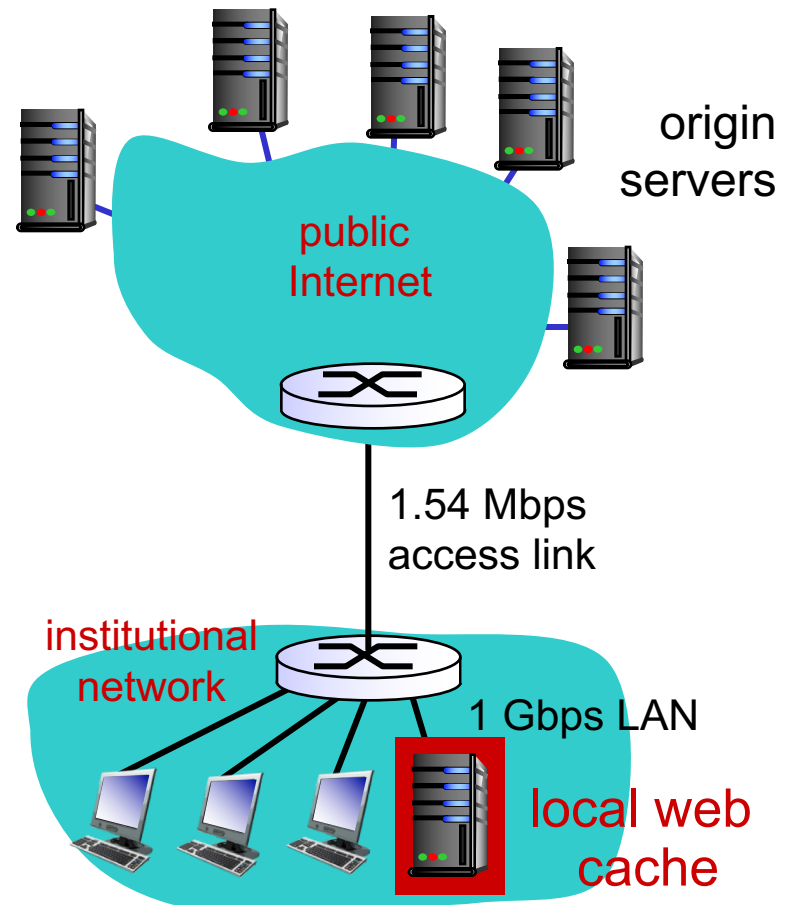
- avg object size: 100K bits
- avg request rate from browsers to origin servers: 15/sec
- avg data rate to browsers: 1.50 Mbps
- RTT from institutional router to any origin server: 2 sec
- access link rate: 1.54 Mbps

consequences:

- LAN utilization: 15%
- access link utilization = ?
- total delay = ?

How to compute link utilization, delay?

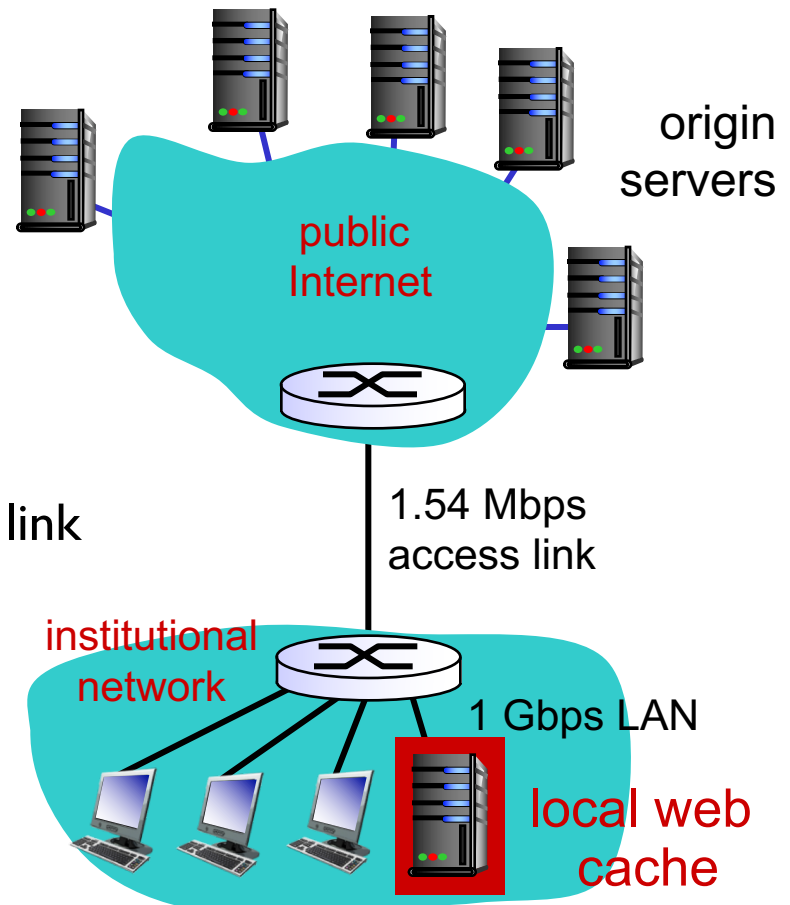
Cost: web cache (cheap!)



Caching example: install local cache

Calculating access link utilization, delay with cache:

- suppose cache hit rate is 0.4
 - 40% requests satisfied at cache, 60% requests satisfied at origin
- access link utilization:
 - 60% of requests use access link
- data rate to browsers over access link
 $= 0.6 * 1.50 \text{ Mbps} = .9 \text{ Mbps}$
 - utilization = $0.9 / 1.54 = .58$
- total delay
 - $= 0.6 * (\text{delay from origin servers}) + 0.4 * (\text{delay when satisfied at cache})$
 - $= 0.6 (2.01) + 0.4 (\sim \text{msecs}) = \sim 1.2 \text{ secs}$
 - less than with 154 Mbps link (and cheaper too!)



Chapter 2: outline

2.1 principles of network applications

2.2 Web and HTTP

2.3 electronic mail

- SMTP, POP3, IMAP

2.4 DNS

2.5 P2P applications

2.6 video streaming and content distribution networks

2.7 socket programming with UDP and TCP

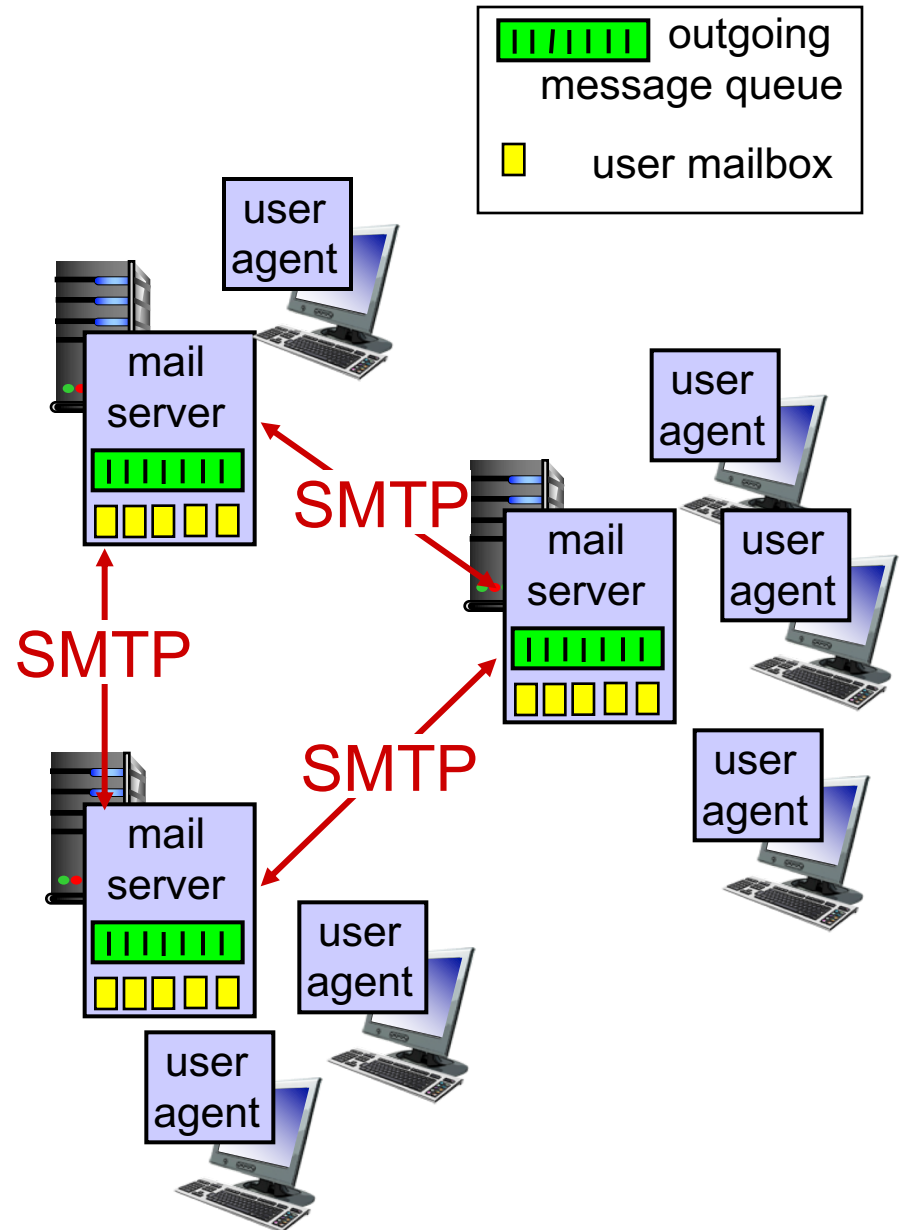
Electronic mail

Three major components:

- user agents
- mail servers
- simple mail transfer protocol: SMTP

User Agent

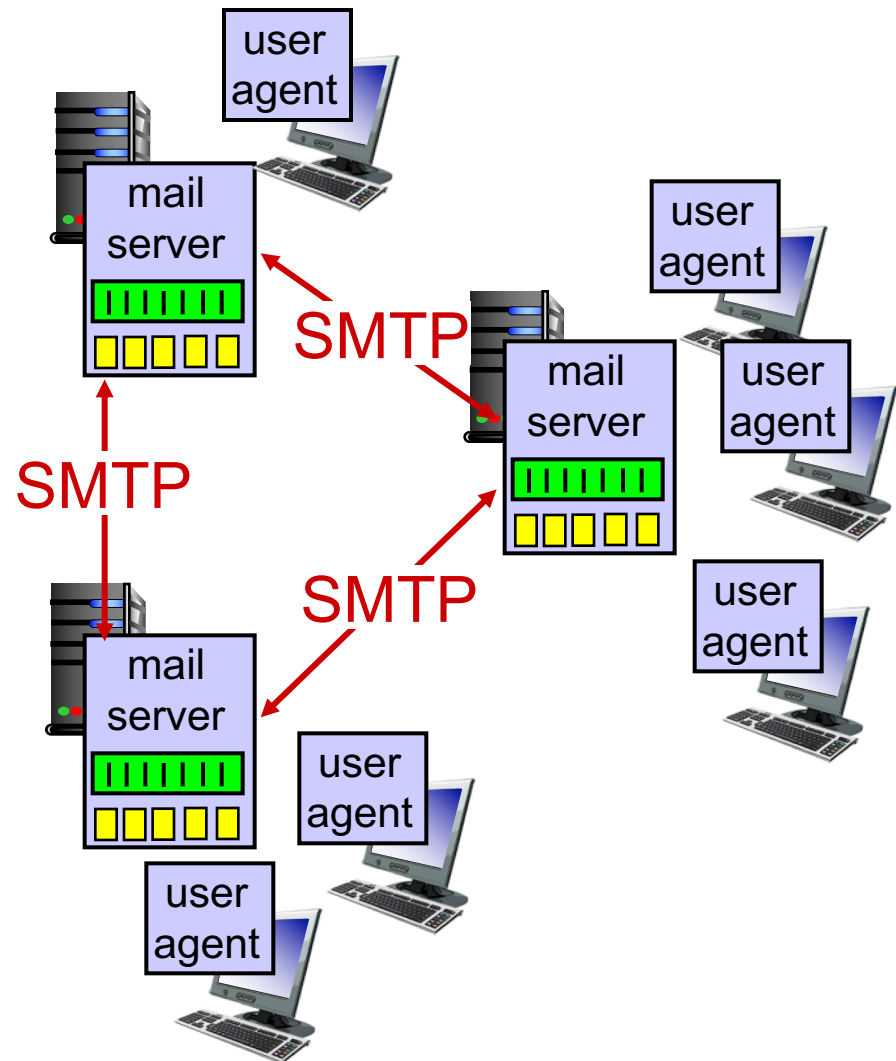
- a.k.a. “mail reader”
- composing, editing, reading mail messages
- e.g., Outlook, Thunderbird, iPhone mail client
- outgoing, incoming messages stored on server



Electronic mail: mail servers

mail servers:

- *mailbox* contains incoming messages for user
- *message queue* of outgoing (to be sent) mail messages
- *SMTP protocol* between mail servers to send email messages
 - client: sending mail server
 - “server”: receiving mail server

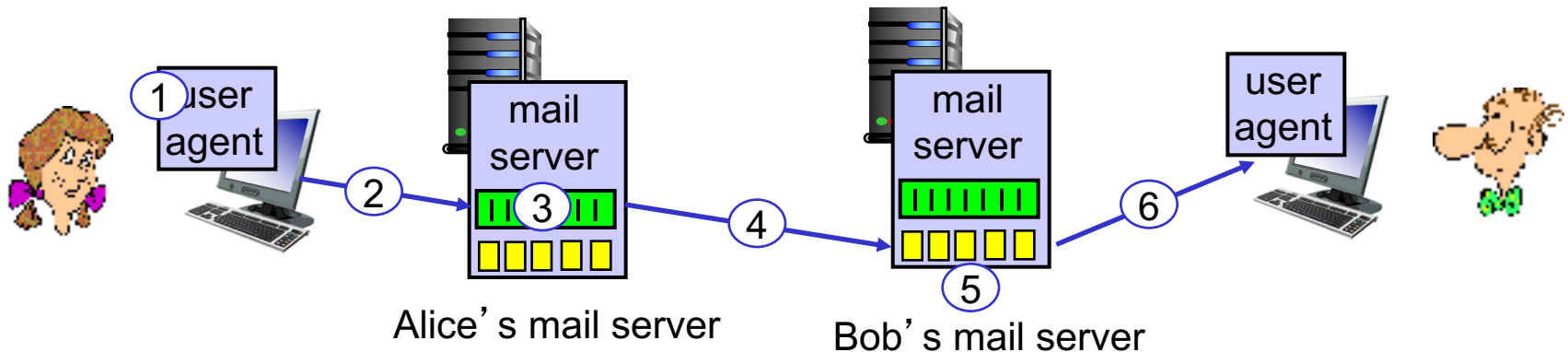


Electronic Mail: SMTP [RFC 2821]

- uses TCP to reliably transfer email message from client to server, port 25
- direct transfer: sending server to receiving server
- three phases of transfer
 - handshaking (greeting)
 - transfer of messages
 - closure
- command/response interaction (like HTTP)
 - **commands:** ASCII text
 - **response:** status code and phrase
- messages must be in 7-bit ASCII

Scenario: Alice sends message to Bob

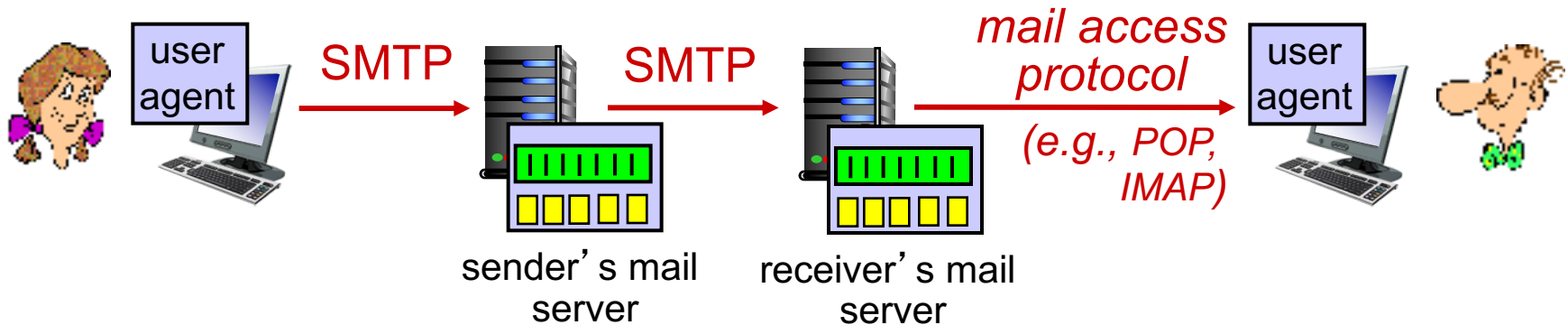
- 1) Alice uses UA to compose message "to" bob@someschool.edu
- 2) Alice's UA sends message to her mail server; message placed in message queue
- 3) client side of SMTP opens TCP connection with Bob's mail server
- 4) SMTP client sends Alice's message over the TCP connection
- 5) Bob's mail server places the message in Bob's mailbox
- 6) Bob invokes his user agent to read message



Sample SMTP interaction

```
S: 220 hamburger.edu
C: HELO crepes.fr
S: 250 Hello crepes.fr, pleased to meet you
C: MAIL FROM: <alice@crepes.fr>
S: 250 alice@crepes.fr... Sender ok
C: RCPT TO: <bob@hamburger.edu>
S: 250 bob@hamburger.edu ... Recipient ok
C: DATA
S: 354 Enter mail, end with "." on a line by itself
C: Do you like ketchup?
C: How about pickles?
C: .
S: 250 Message accepted for delivery
C: QUIT
S: 221 hamburger.edu closing connection
```

Mail access protocols



- **SMTP:** delivery/storage to receiver's server
- mail access protocol: retrieval from server
 - **POP:** Post Office Protocol [RFC 1939]: authorization, download
 - **IMAP:** Internet Mail Access Protocol [RFC 1730]: more features, including manipulation of stored messages on server
 - **HTTP:** gmail, Hotmail, Yahoo! Mail, etc.

Chapter 2: outline

2.1 principles of network applications

2.2 Web and HTTP

2.3 electronic mail

- SMTP, POP3, IMAP

2.4 DNS

2.5 P2P applications

2.6 video streaming and content distribution networks

2.7 socket programming with UDP and TCP