

Chapter I

Introduction

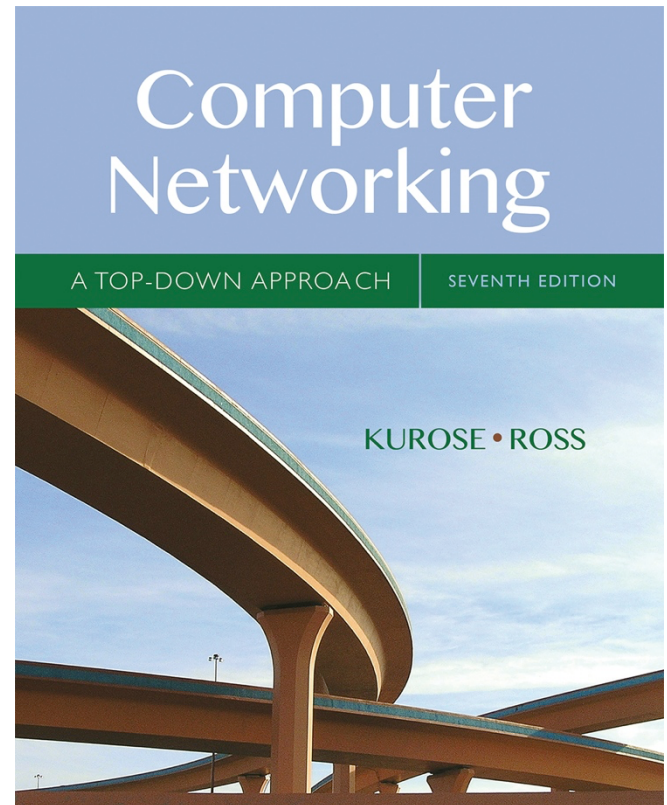
A note on the use of these Powerpoint slides:

We're making these slides freely available to all (faculty, students, readers). They're in PowerPoint form so you see the animations; and can add, modify, and delete slides (including this one) and slide content to suit your needs. They obviously represent a *lot* of work on our part. In return for use, we only ask the following:

- If you use these slides (e.g., in a class) that you mention their source (after all, we'd like people to use our book!)
- If you post any slides on a www site, that you note that they are adapted from (or perhaps identical to) our slides, and note our copyright of this material.

Thanks and enjoy! JFK/KWR

©All material copyright 1996-2016
J.F Kurose and K.W. Ross, All Rights Reserved



Computer Networking: A Top Down Approach

7th edition

Jim Kurose, Keith Ross

Pearson/Addison Wesley

April 2016

Chapter 1: roadmap

1.1 what is the Internet?

1.2 network edge

- end systems, access networks, links

1.3 network core

- packet switching, circuit switching, network structure

1.4 delay, loss, throughput in networks

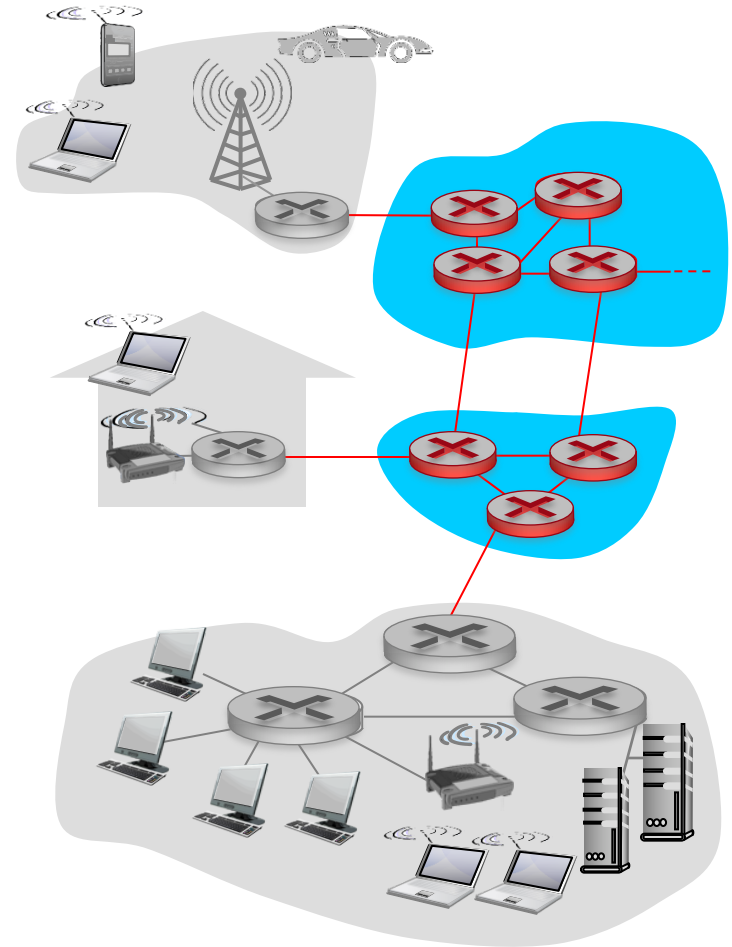
1.5 protocol layers, service models

1.6 networks under attack: security

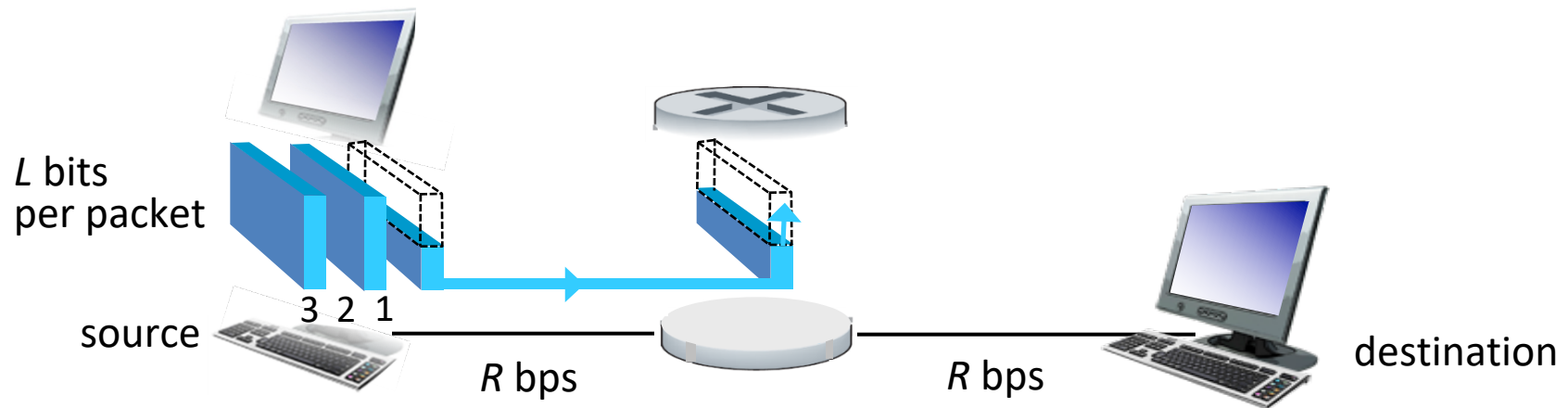
1.7 history

The network core

- mesh of interconnected routers
- packet-switching: hosts break application-layer messages into *packets*
 - forward packets from one router to the next, across links on path from source to destination
 - each packet transmitted at full link capacity



Packet-switching: store-and-forward



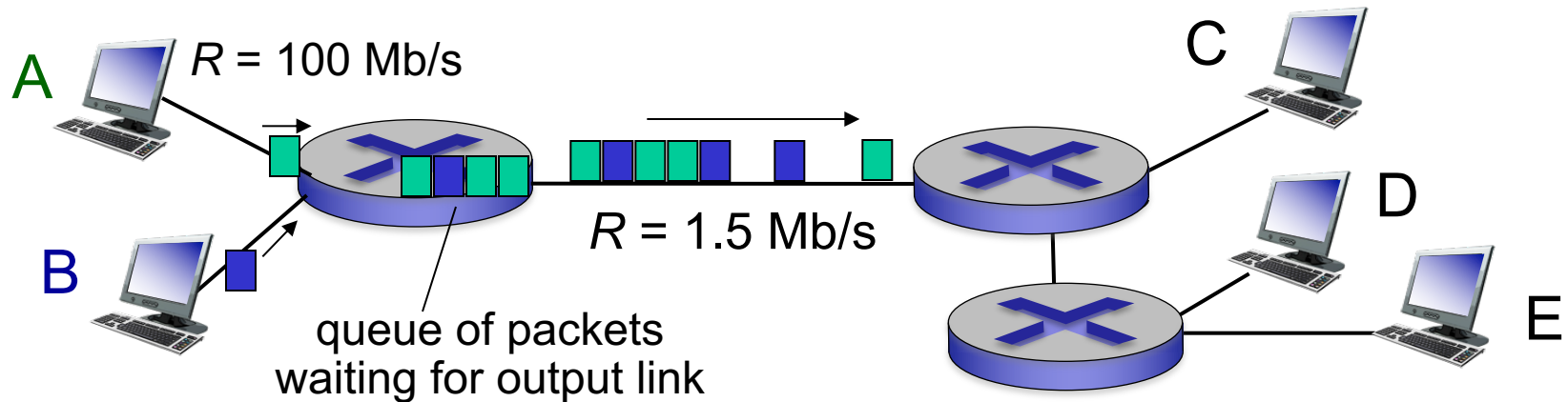
- takes L/R seconds to transmit (push out) L -bit packet into link at R bps
- **store and forward**: entire packet must arrive at router before it can be transmitted on next link
- end-end delay = $2L/R$ (assuming zero propagation delay)

one-hop numerical example:

- $L = 7.5$ Mbits
- $R = 1.5$ Mbps
- one-hop transmission delay = 5 sec

} more on delay shortly ...

Packet Switching: queueing delay, loss



queuing and loss:

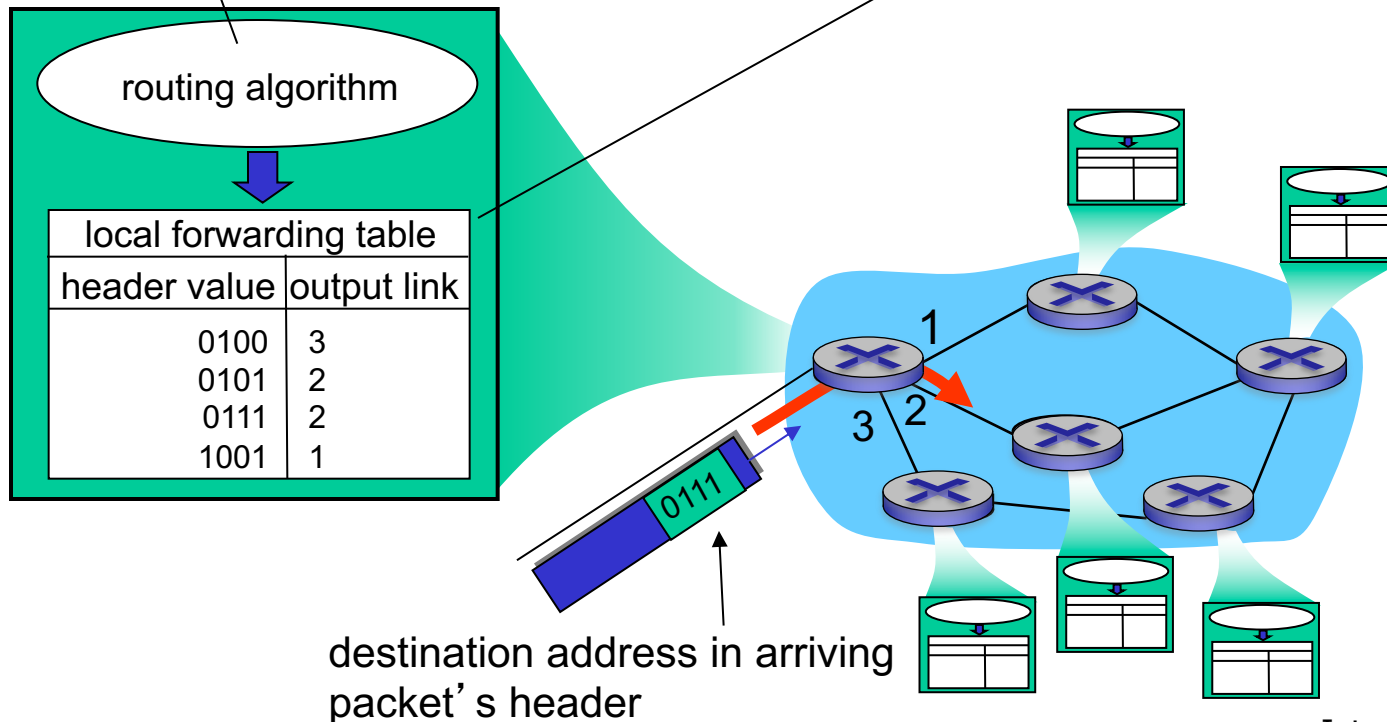
- if arrival rate (in bits) to link exceeds transmission rate of link for a period of time:
 - packets will queue, wait to be transmitted on link
 - packets can be dropped (lost) if memory (buffer) fills up

Two key network-core functions

routing: determines source-destination route taken by packets

- *routing algorithms*

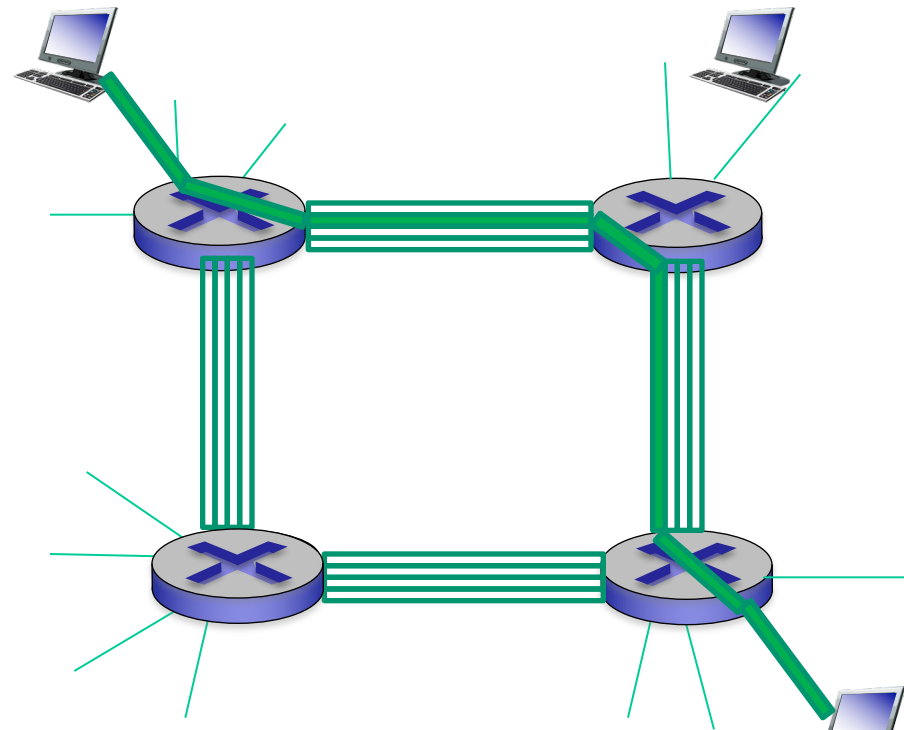
forwarding: move packets from router's input to appropriate router output



Alternative core: circuit switching

end-end resources allocated to, reserved for “call” between source & dest:

- in diagram, each link has four circuits.
 - call gets 2nd circuit in top link and 1st circuit in right link.
- dedicated resources: no sharing
 - circuit-like (guaranteed) performance
- circuit segment idle if not used by call (*no sharing*)
- commonly used in traditional telephone networks

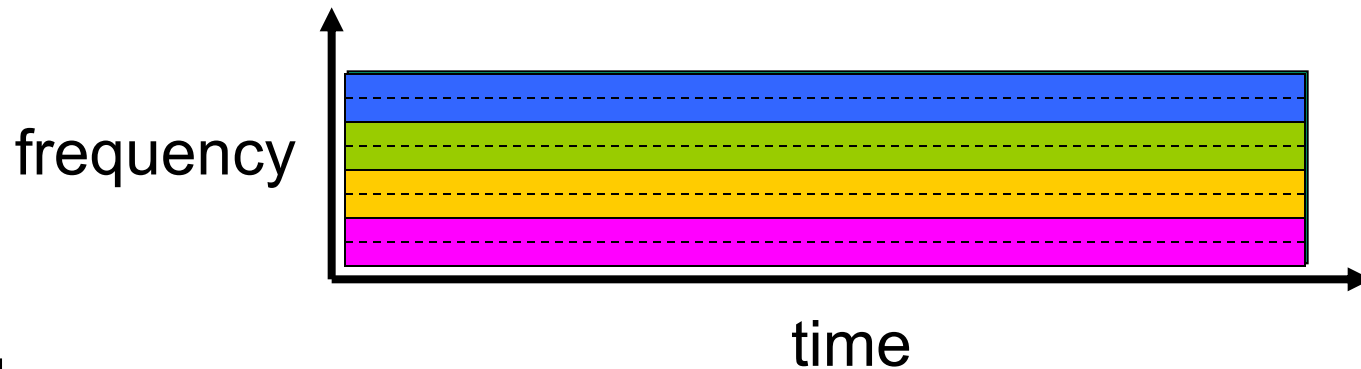


Circuit switching: FDM versus TDM

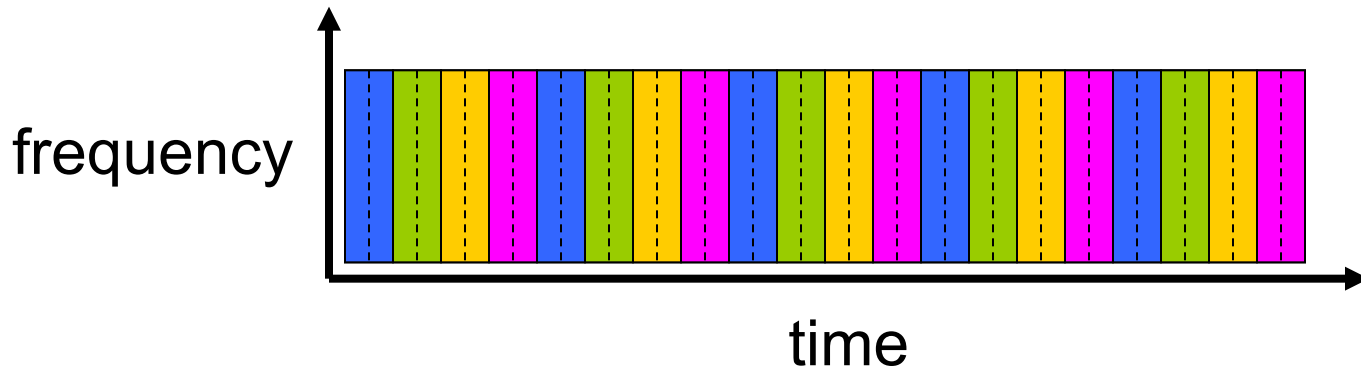
FDM

Example:

4 users



TDM

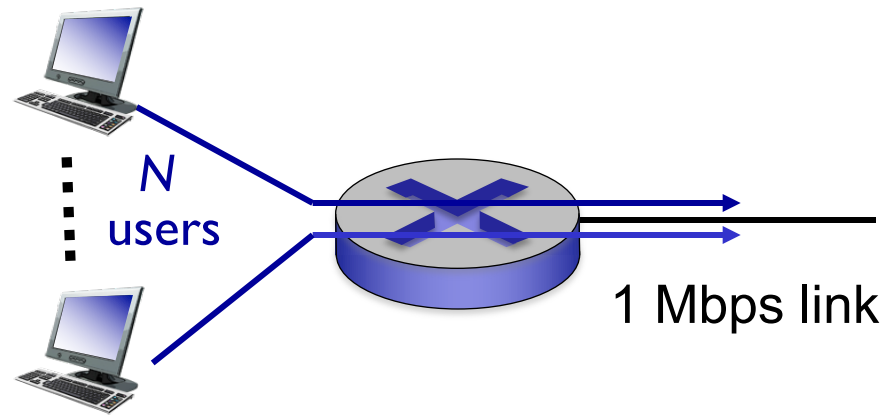


Packet switching versus circuit switching

packet switching allows more users to use network!

example:

- 1 Mb/s link
- each user:
 - 100 kb/s when “active”
 - active 10% of time
- *circuit-switching*:
 - 10 users
- *packet switching*:
 - with 35 users, probability > 10 active at same time is less than .0004 *



Q: how did we get value 0.0004?

Q: what happens if > 35 users ?

* Check out the online interactive exercises for more examples: http://gaia.cs.umass.edu/kurose_ross/interactive/

Packet switching versus circuit switching

is packet switching a “slam dunk winner?”

- great for bursty data
 - resource sharing
 - simpler, no call setup
- **excessive congestion possible:** packet delay and loss
 - protocols needed for reliable data transfer, congestion control
- **Q: How to provide circuit-like behavior?**
 - bandwidth guarantees needed for audio/video apps
 - still an unsolved problem (chapter 7)

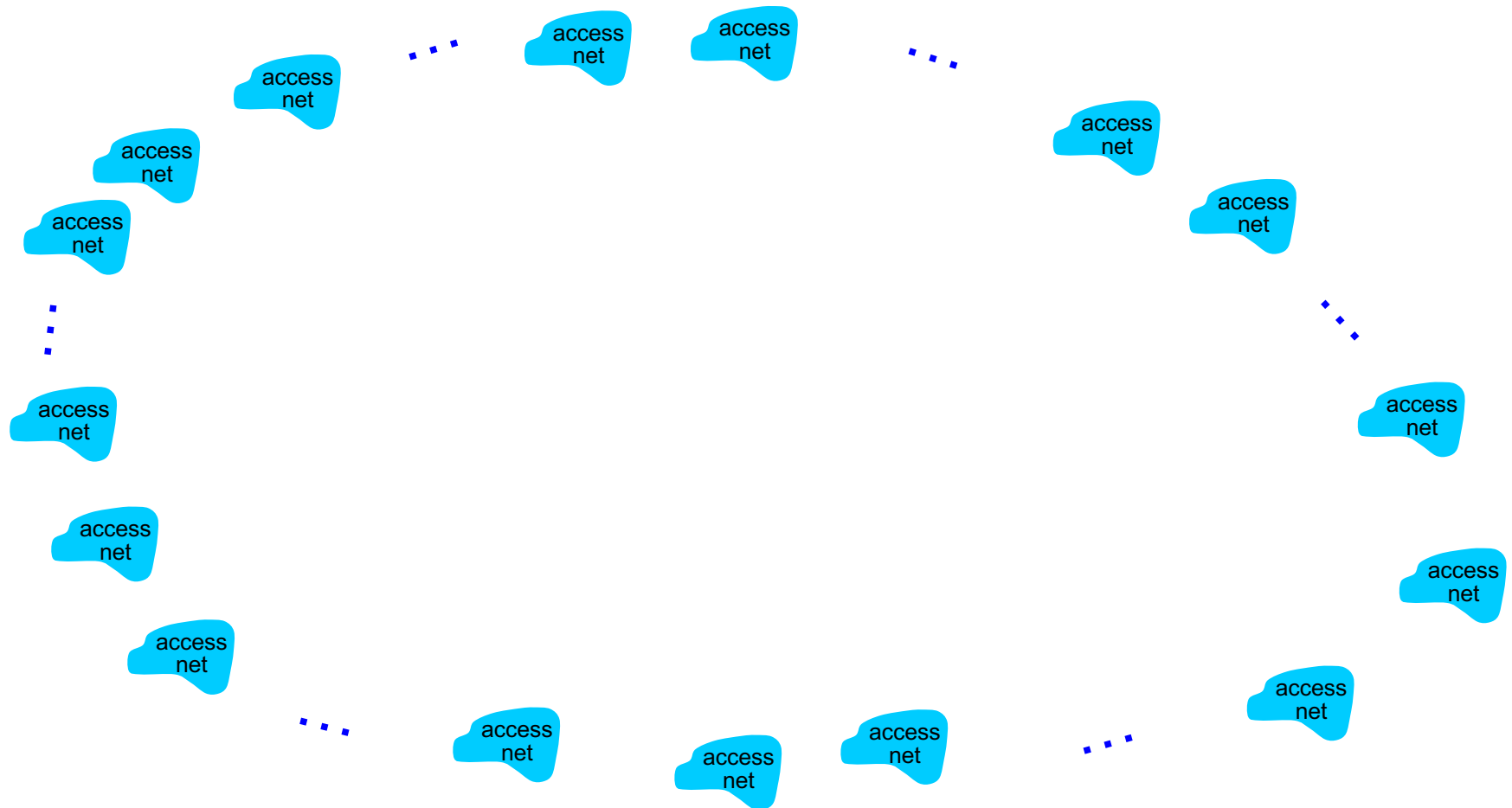
Q: human analogies of reserved resources (circuit switching) versus on-demand allocation (packet-switching)?

Internet structure: network of networks

- End systems connect to Internet via **access ISPs** (Internet Service Providers)
 - residential, company and university ISPs
- Access ISPs in turn must be interconnected.
 - so that any two hosts can send packets to each other
- Resulting network of networks is very complex
 - evolution was driven by **economics** and **national policies**
- Let's take a stepwise approach to describe current Internet structure

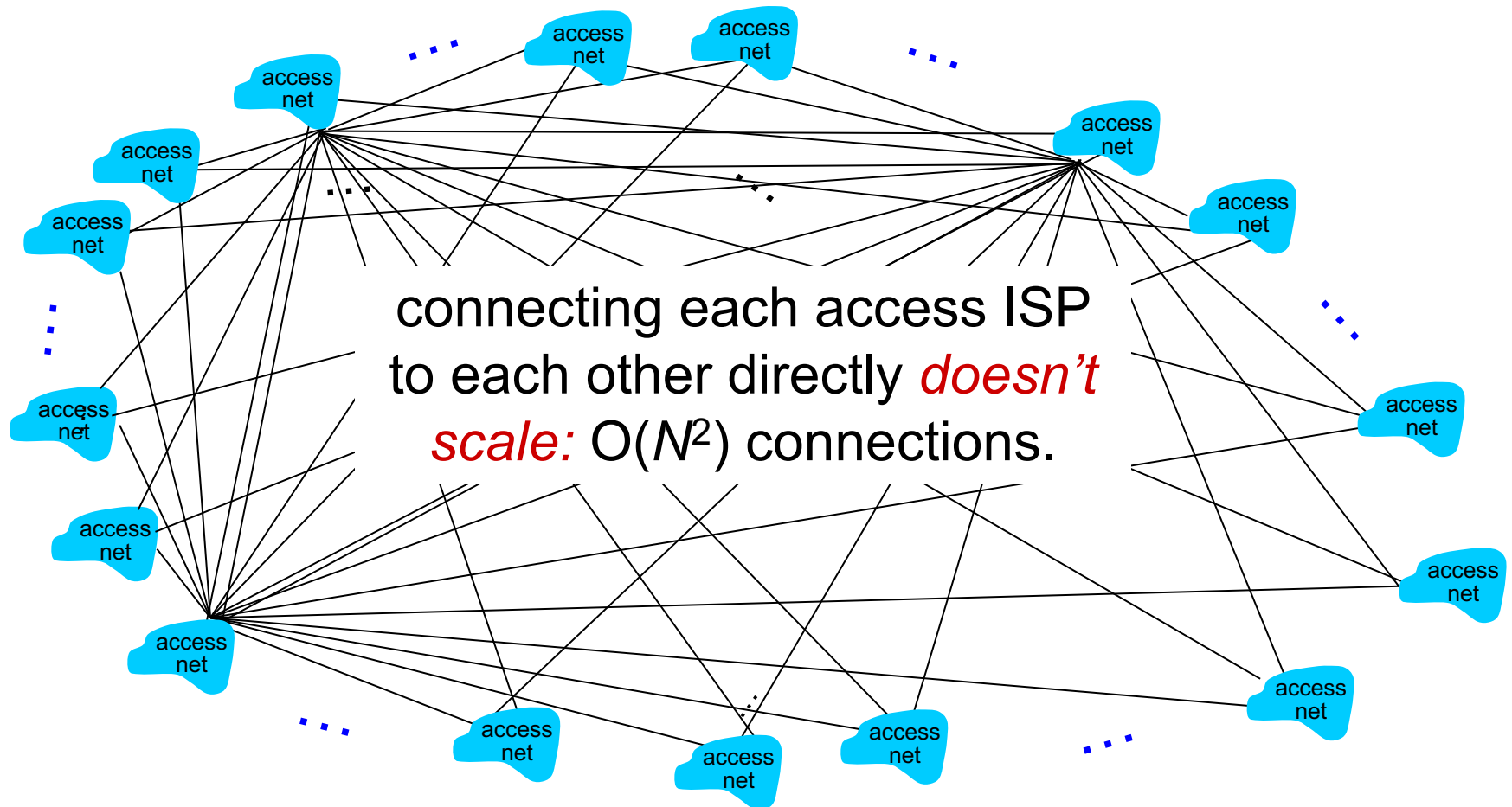
Internet structure: network of networks

Question: given *millions* of access ISPs, how to connect them together?



Internet structure: network of networks

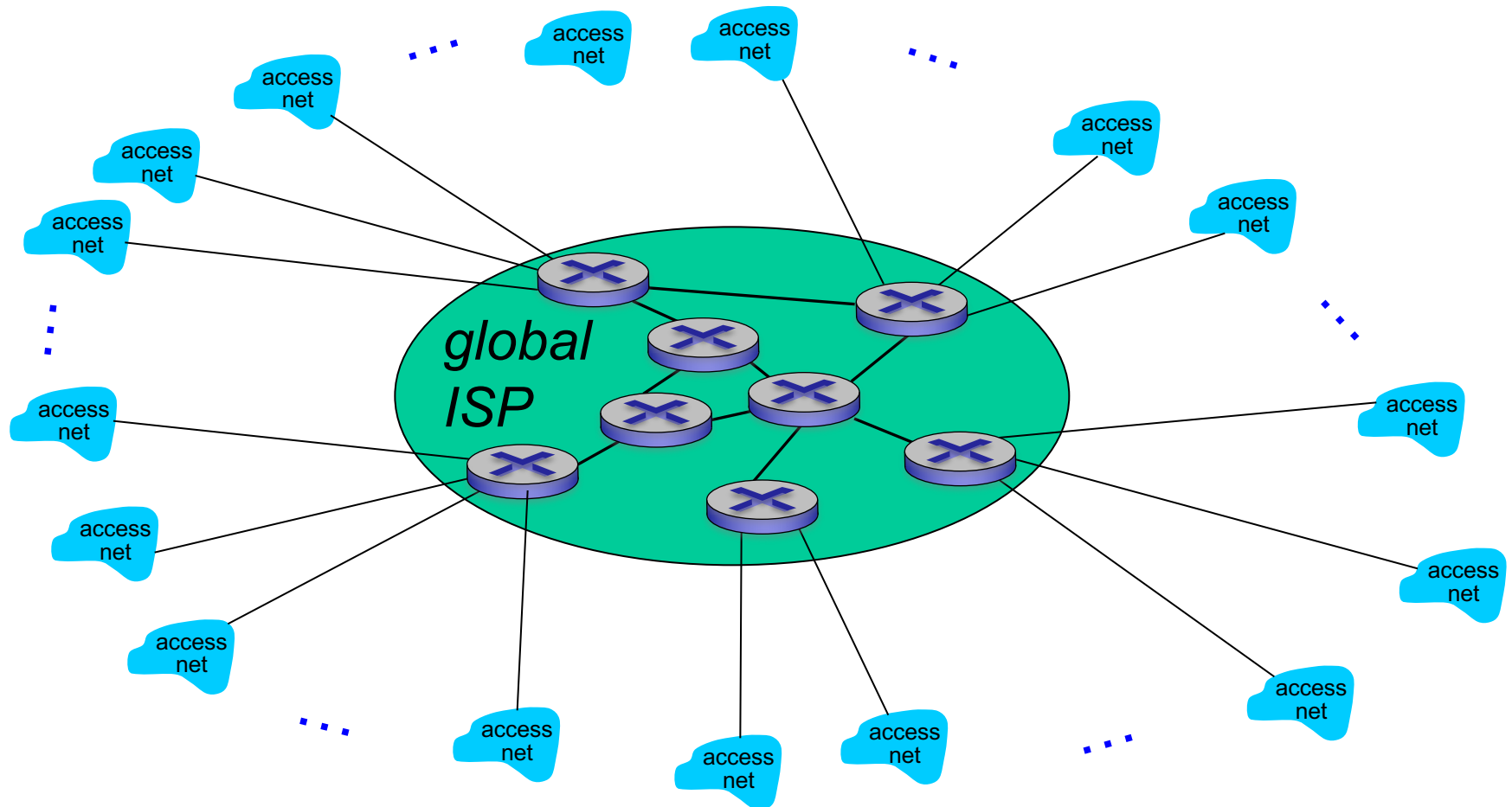
Option: connect each access ISP to every other access ISP?



Internet structure: network of networks

Option: connect each access ISP to one global transit ISP?

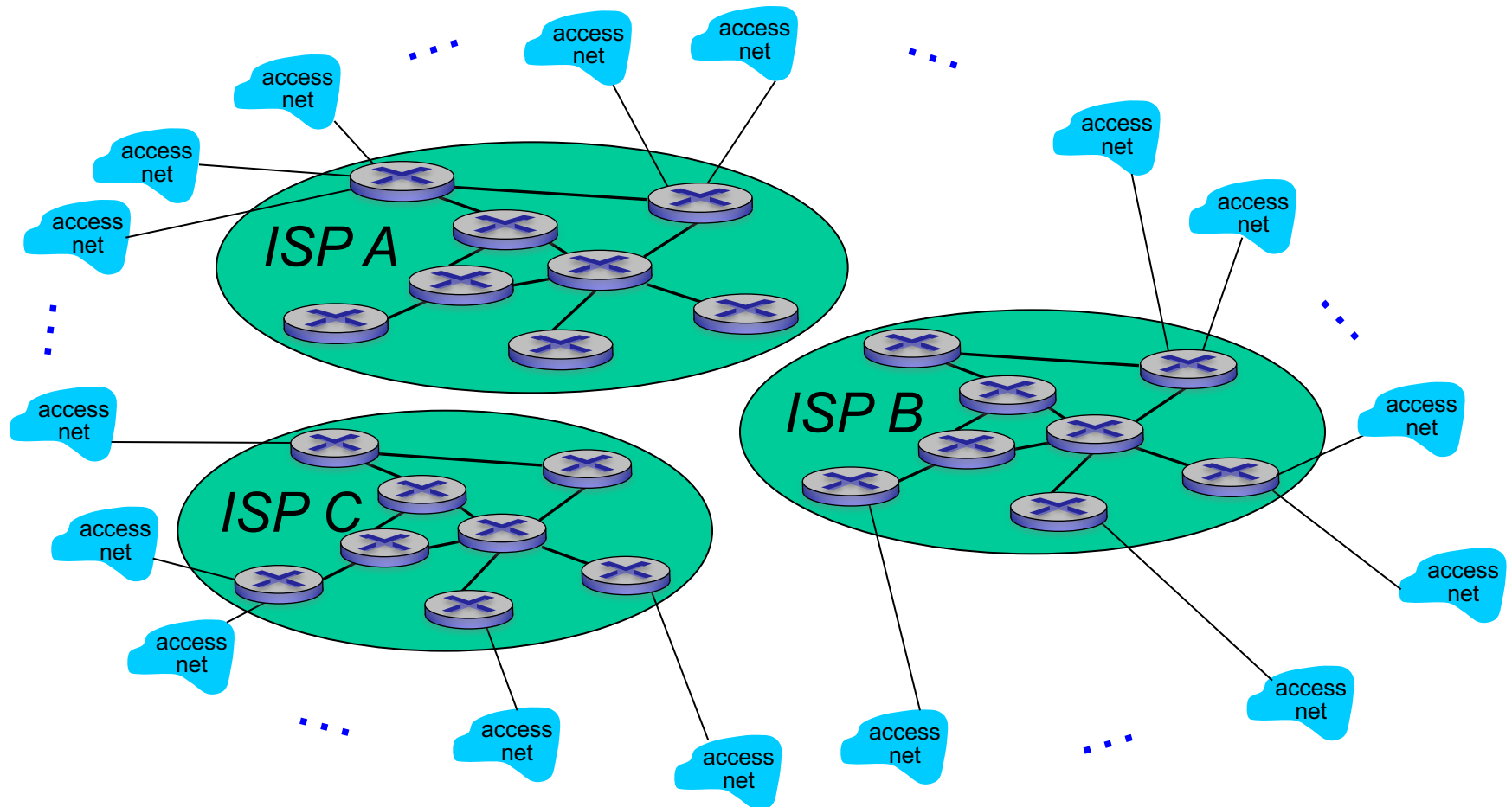
Customer and *provider* ISPs have economic agreement.



Internet structure: network of networks

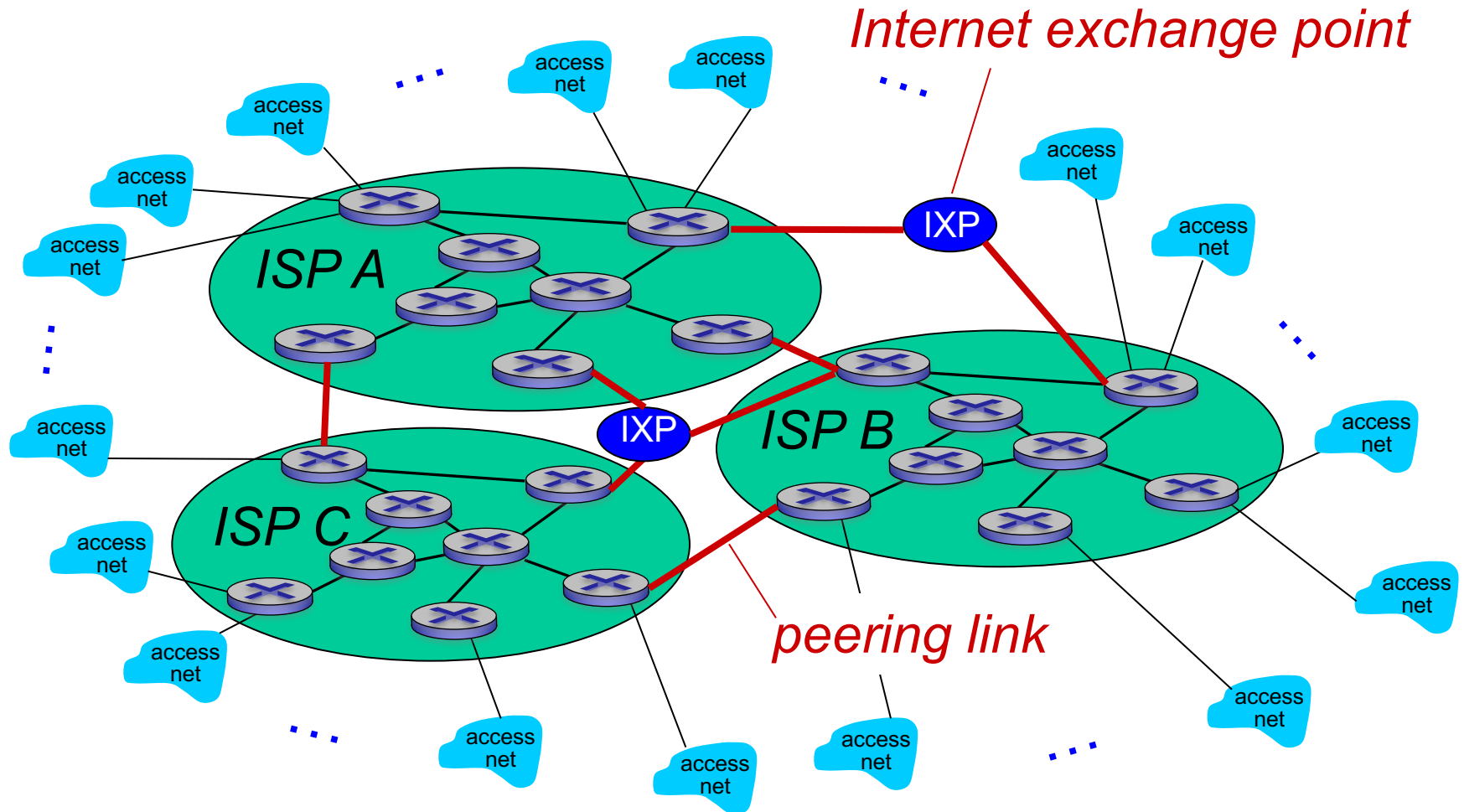
But if one global ISP is viable business, there will be competitors

....



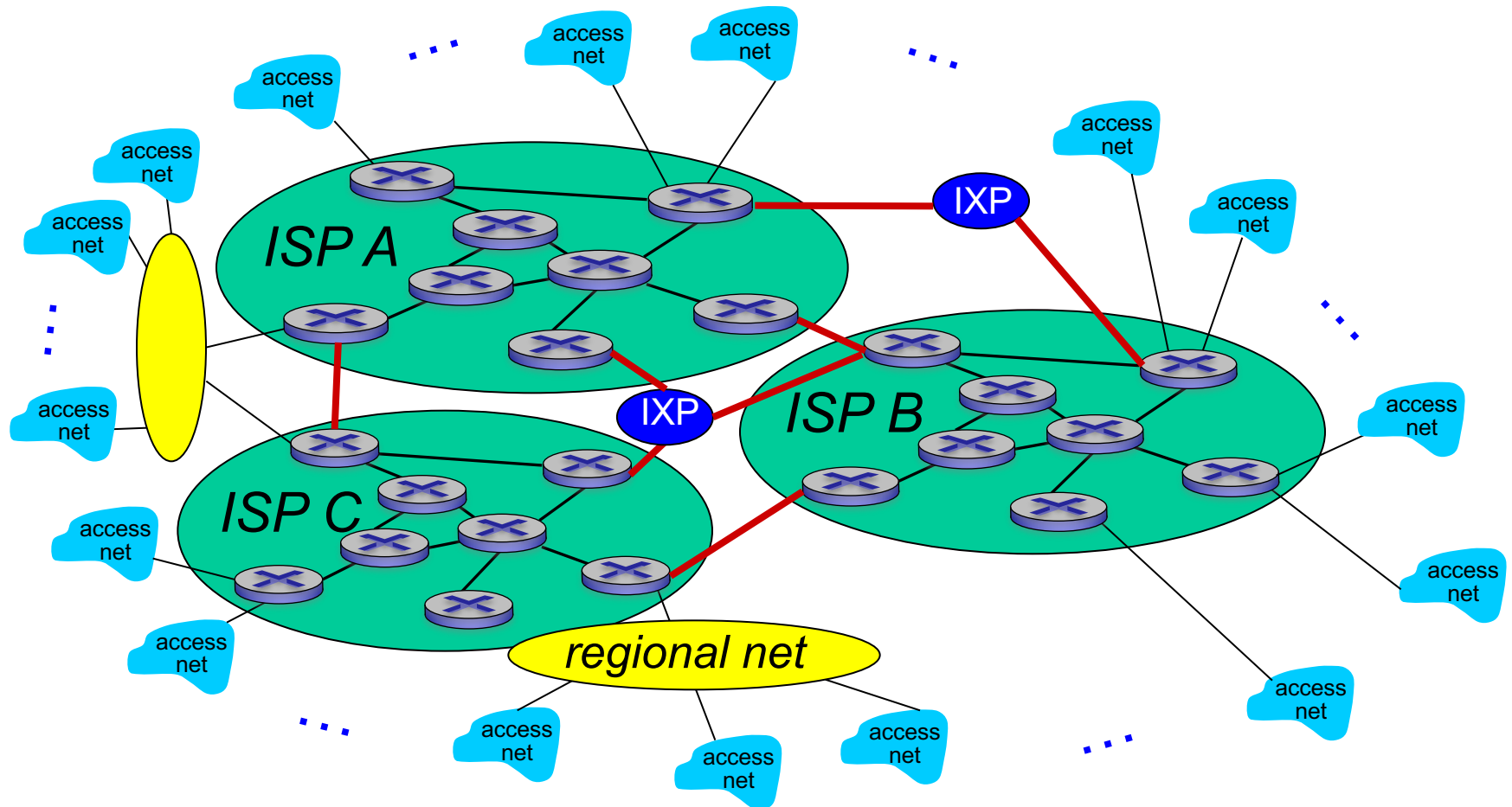
Internet structure: network of networks

But if one global ISP is viable business, there will be competitors
.... which must be interconnected



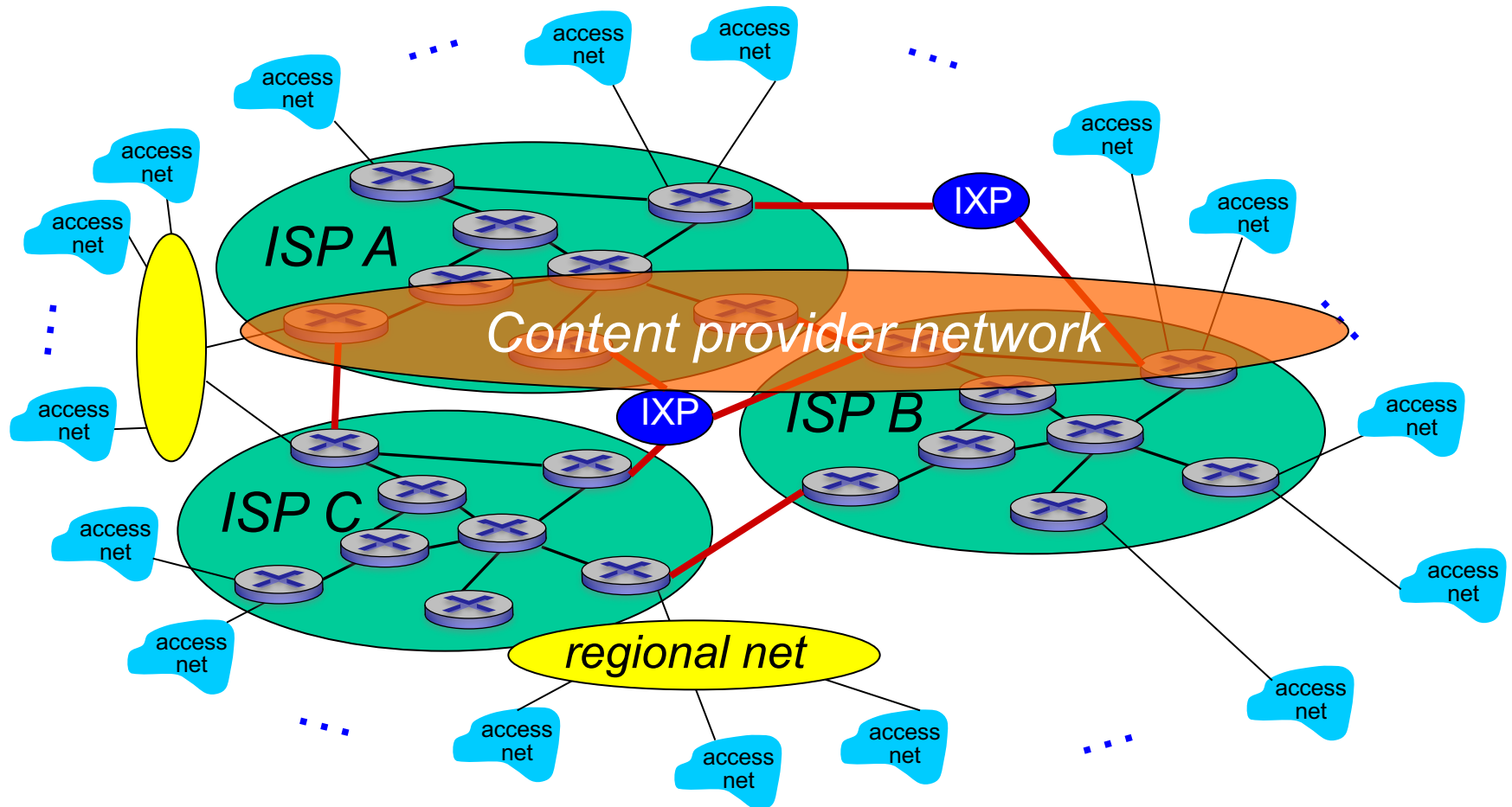
Internet structure: network of networks

... and regional networks may arise to connect access nets to ISPs

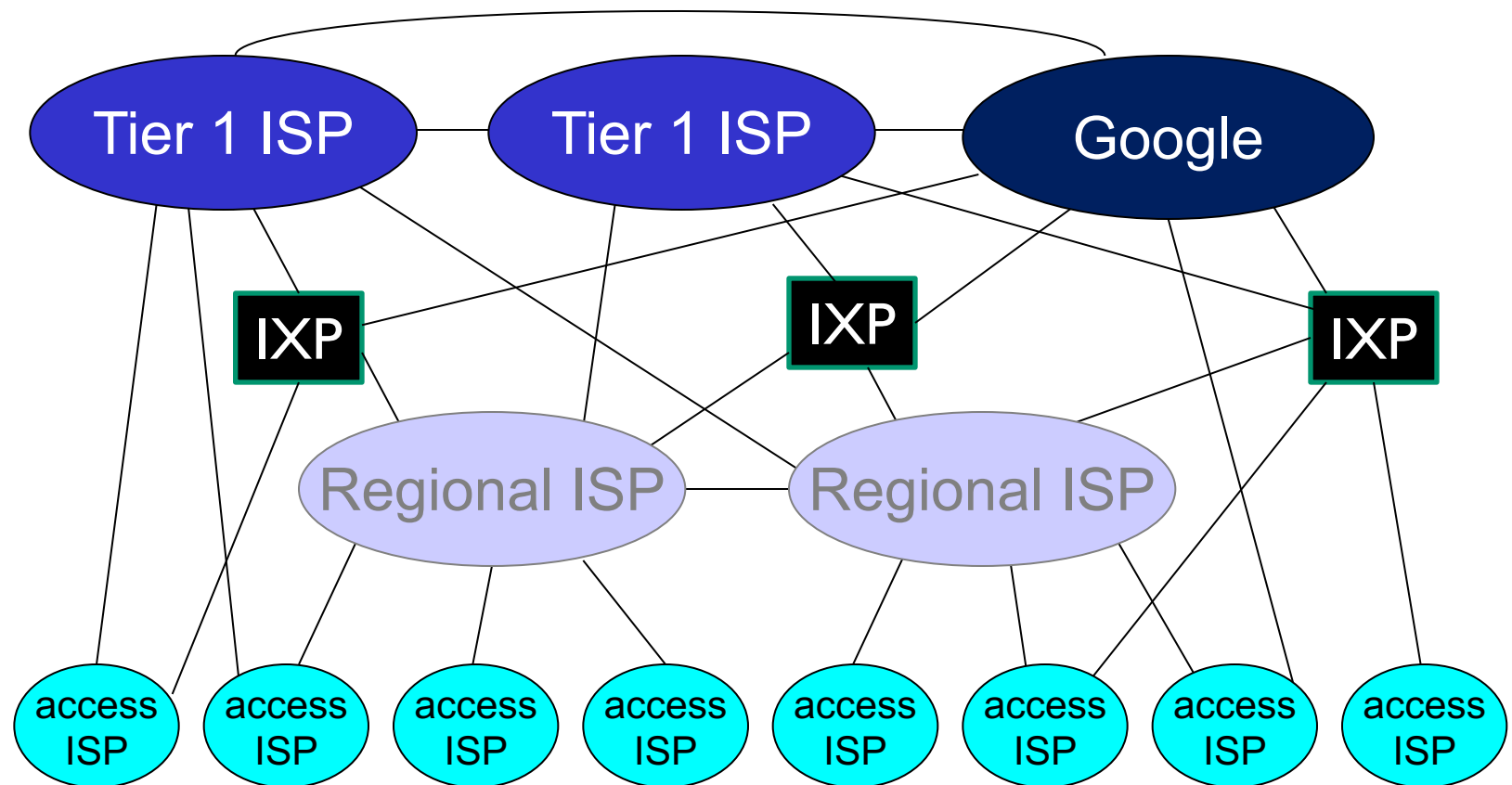


Internet structure: network of networks

... and content provider networks (e.g., Google, Microsoft, Akamai) may run their own network, to bring services, content close to end users

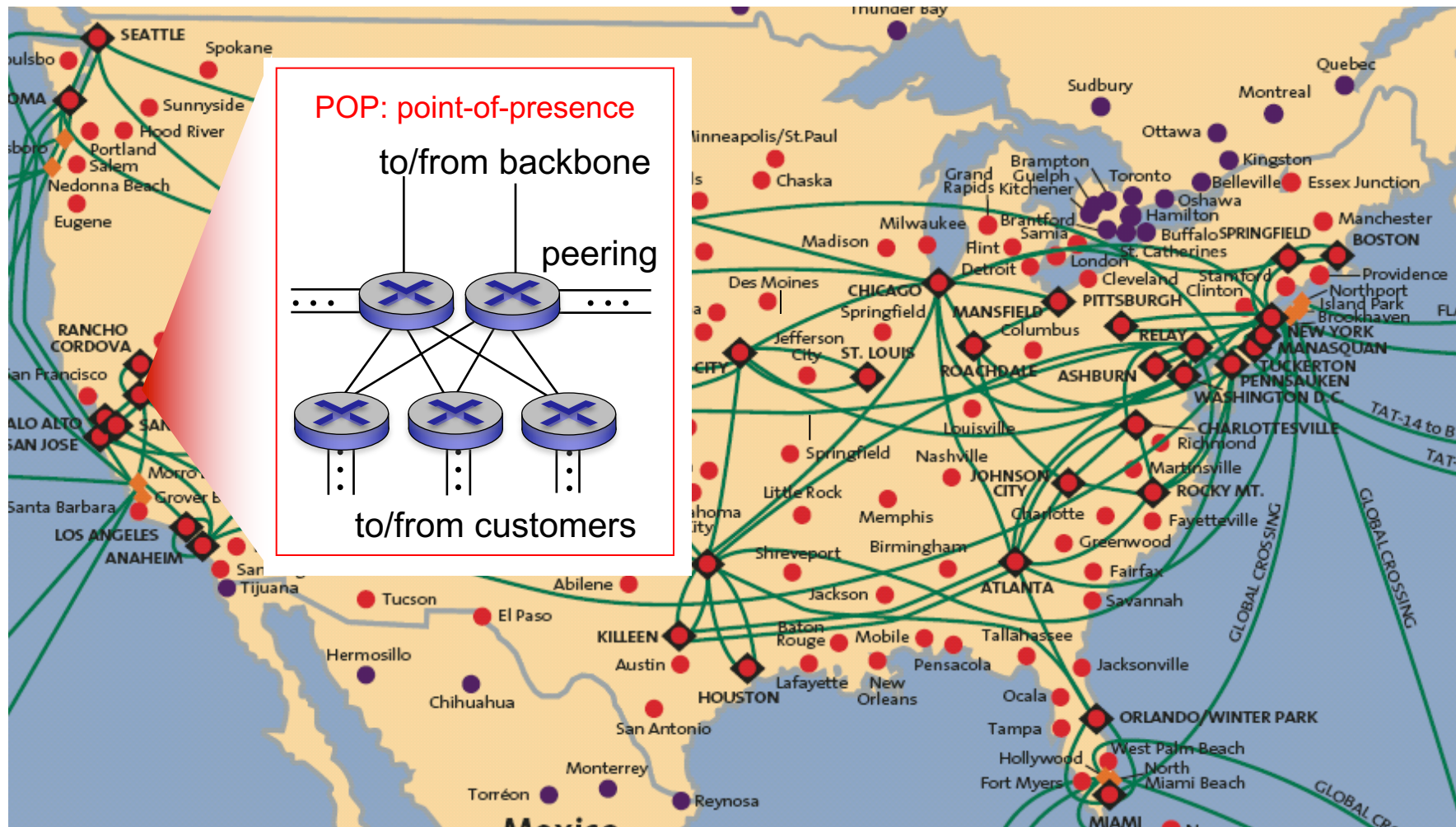


Internet structure: network of networks



- at center: small # of well-connected large networks
 - “**tier-1**” **commercial ISPs** (e.g., Level 3, Sprint, AT&T, NTT), national & international coverage
 - **content provider network** (e.g., Google): private network that connects its data centers to Internet, often bypassing tier-1, regional ISPs

Tier-1 ISP: e.g., Sprint



Chapter 1: roadmap

1.1 what is the Internet?

1.2 network edge

- end systems, access networks, links

1.3 network core

- packet switching, circuit switching, network structure

1.4 delay, loss, throughput in networks

1.5 protocol layers, service models

1.6 networks under attack: security

1.7 history